

# DWF Review Markup

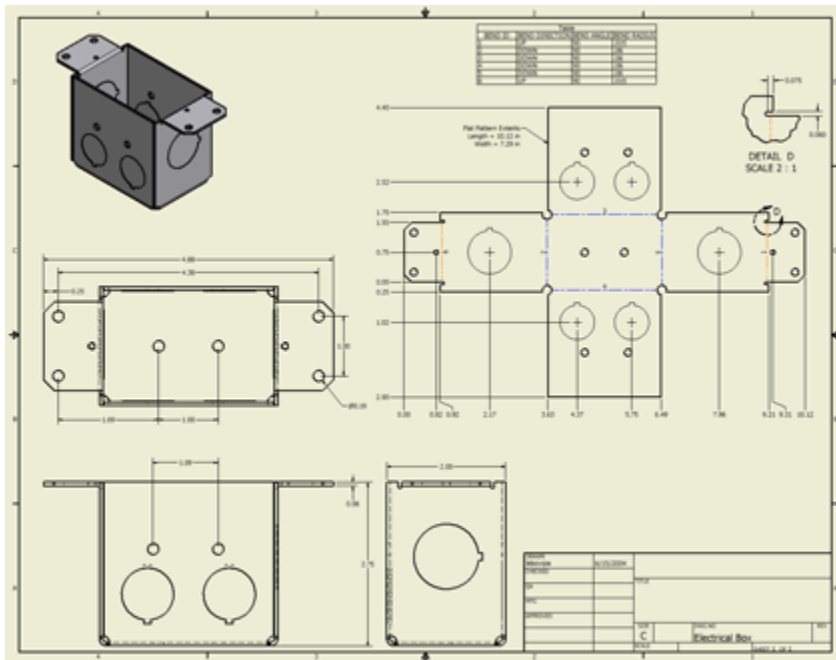
This Skill Builder shows you how to:

- Publish a drawing from Autodesk Inventor to DWF format.
- Add review markup to the DWF file.
- Load that markup in the Inventor drawing, and then review the markup.

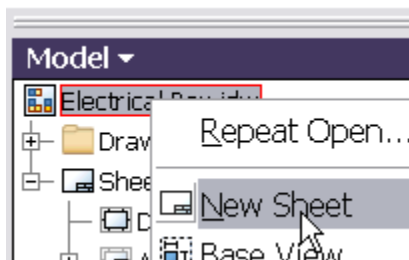
The Skill Builder is intended to assist those who are creating markup callouts and comments in Autodesk Design Review as well as those who are assessing and responding to those markups within Inventor. The Skill Builder assumes you are using Autodesk Inventor 2009 and that Autodesk Design Review is installed on your machine.

To begin, set your active project to **samples**.

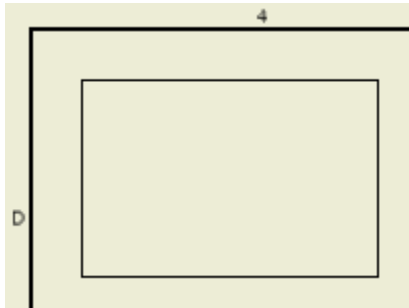
Open **Electrical Box.idw**, located in Sheet Metal > Electrical Box.



Add another sheet to the drawing. In the browser, right-click **Electrical Box.idw**, and then select **New Sheet**.



Create a sketch on the sheet and draw a small rectangle.



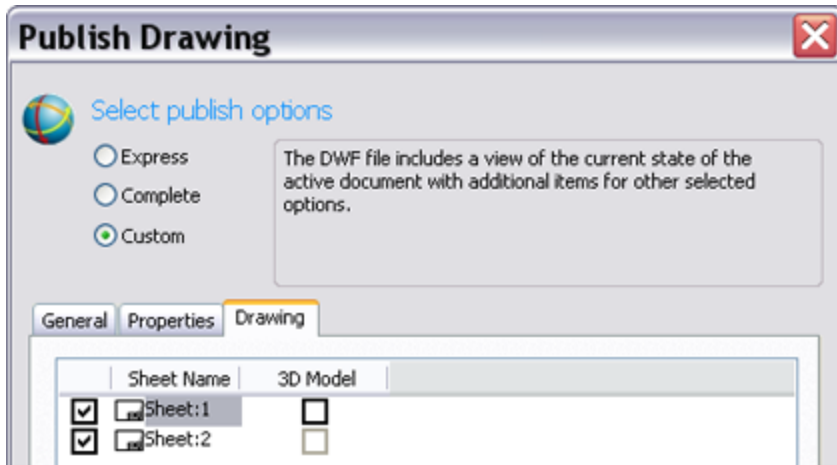
Exit the sketch.

The intent is to send this drawing to a reviewer so the reviewer can check the drawing and add markup and comments using Autodesk Design Review. From the main menu, select **File > Publish DWF**.

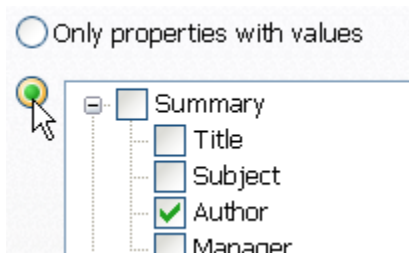
In the Publish Drawing dialog box, ensure the **Custom** option is selected.



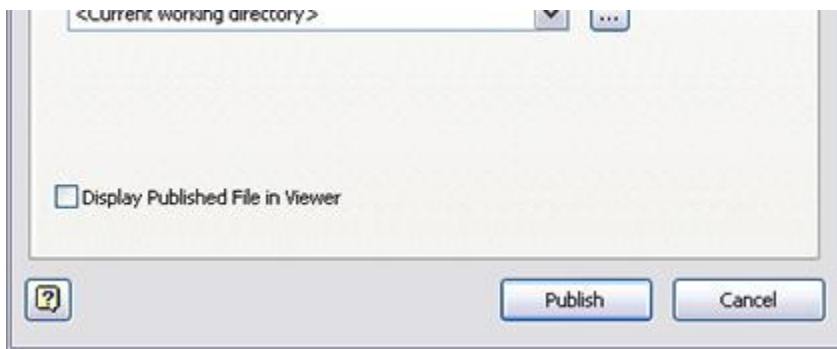
Notice that when the **Custom** option is selected, the Drawing tab is available. Select the drawing tab. If the drawing contains multiple sheets, the sheets are listed on the tab and are available for inclusion or exclusion from the publish operation. Select both sheets, and remove the checkmark in the 3D Model column.



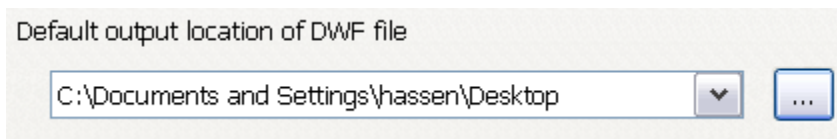
The Properties tab lists file properties. By default, only file properties that contain a value are included. You can select the radio button next to the property list to make other properties available for selection. You do not need to make any additional selections for this skill builder.



On the General tab, ensure that the **Display Published File in Viewer** option is not selected.



Unless you specify otherwise, the .DWF file is published to the current working directory. For this exercise, select your desktop as the location.



Click **Publish**.

Use the default file name.

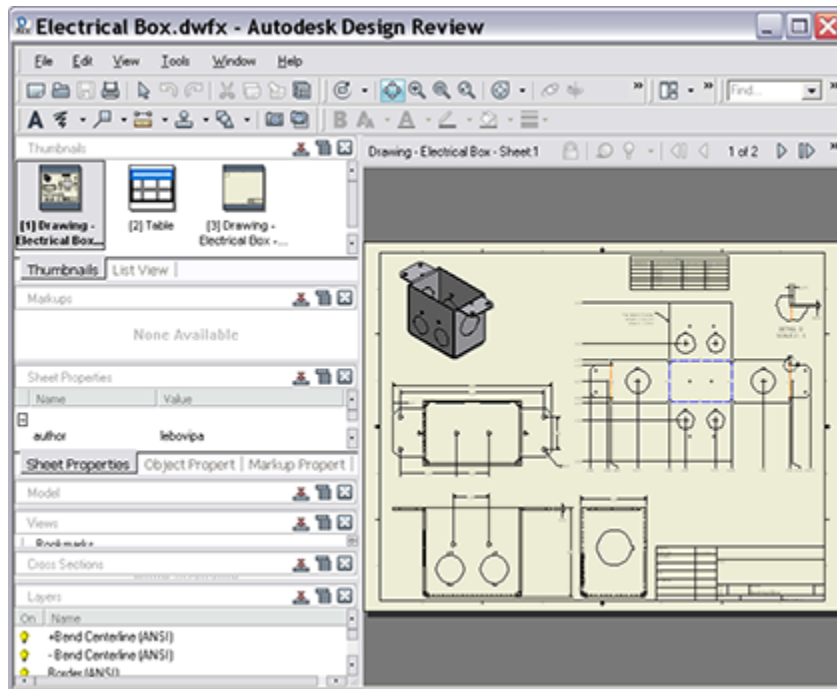
Note: If you want to access the Publish Drawing dialog box again before publishing, you can click the Options button.

Click **Save**. The dwf file is published to the selected directory.

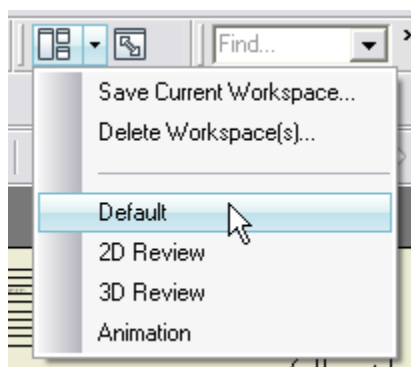
Save and close the drawing.

Start Autodesk Design Review. In Windows XP, select Start > Programs > Autodesk > Autodesk Design Review. 2009

Drag the DWF file for the drawing into the Autodesk Design Review window to open the file, or use the Open tool.



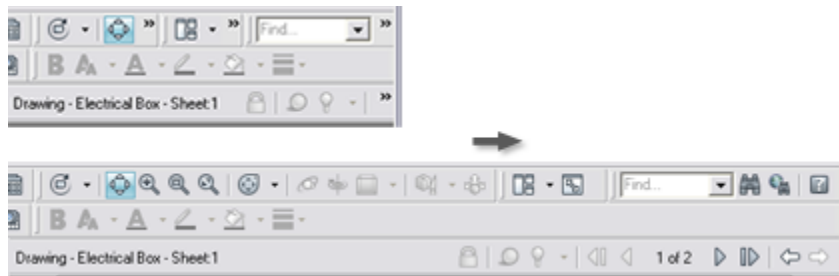
From the Manage Workspace(s) menu, ensure **Default** is selected.



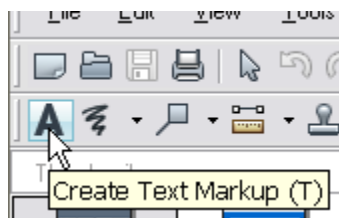
Note: This will maximize the Autodesk Design Review window. You may want to resize the window.

Next, you work in the role of Reviewer and use a few of the Autodesk Design Review tools to add some markup to the DWF file.

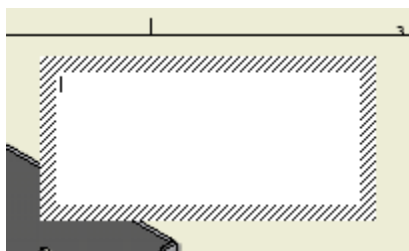
If necessary, resize the toolbars to ensure that the full toolbar is available.



Click the **Text Markup** tool.

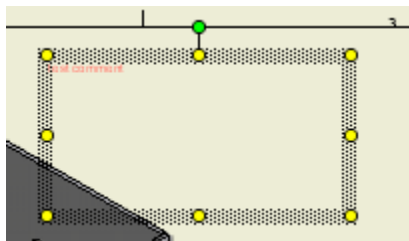


Click, hold, and drag to create the text box. The exact size and position of the text box is not important.



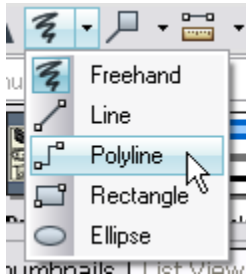
Type **test comment** in the text box.

Click once outside the text box to exit text entry mode.

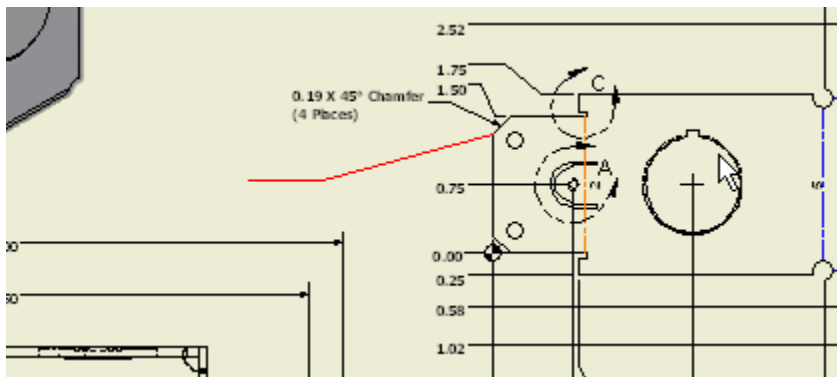


Note: Use the yellow grips to resize the box and the green grip to rotate the box.

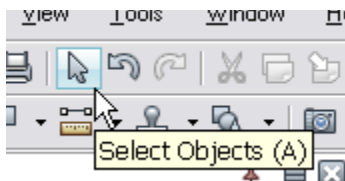
Click the **Polyline** tool.



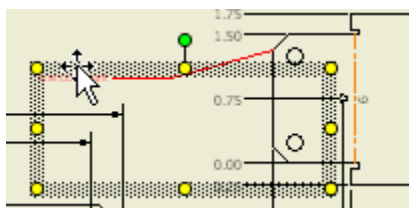
Add a polyline to the drawing. You can hold down the Shift key to snap the line in 15 degree increments. Press **Esc** to end the line.



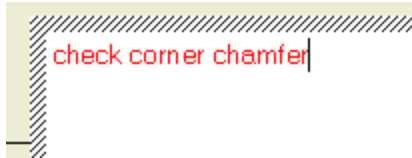
Ensure the **Select Objects** tool is selected.



Drag the text you created next to the end of the polyline. Pause the cursor over the text until the cursor changes to the Move cursor, then click and drag.

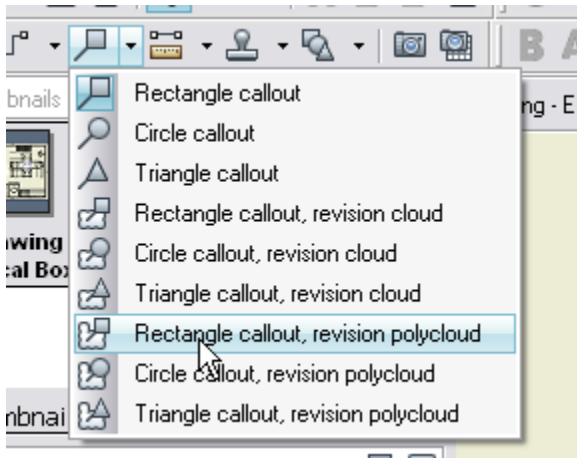


Double-click the text to edit the text. Replace **test comment** with **check corner chamfer**.

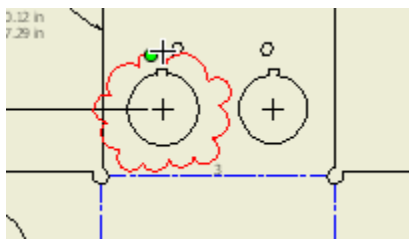


Click away from the box to end the text edit. Reposition the text box, as needed.

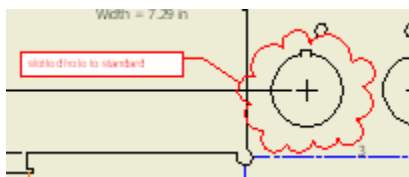
Click the **Rectangle callout, revision polycloud** tool.



Add the cloud polyline to the drawing, similar to the illustration. The green glyph indicates the line endpoint snap.

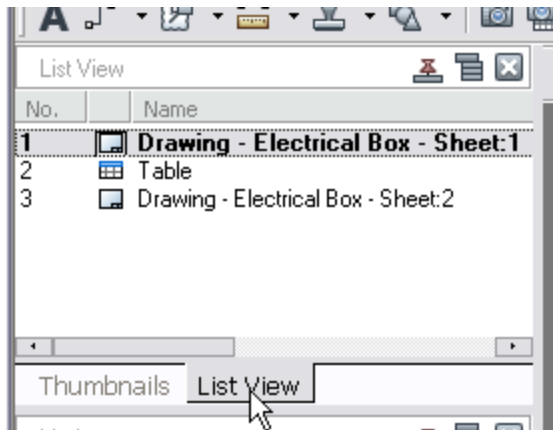


Click to place the text box, then type **slotted hole to standard**. Click away from the box to end text entry mode.

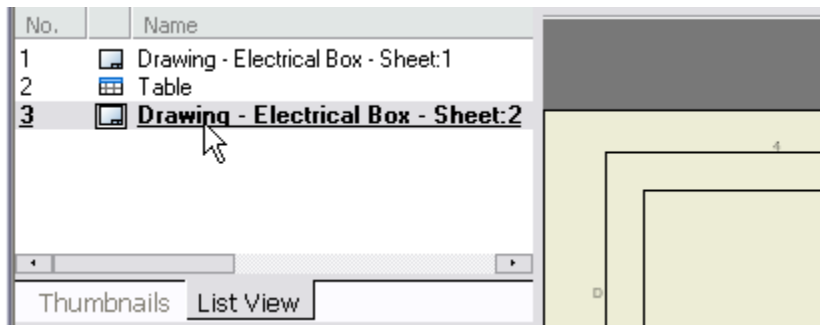


Next, you add markup to the second sheet.

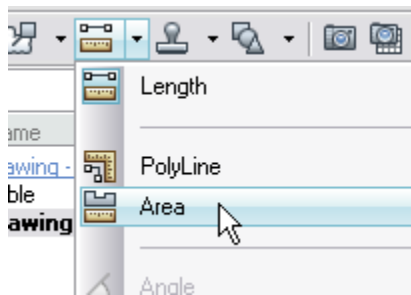
Note: You can switch from thumbnail view to list view. Select the List View tab.



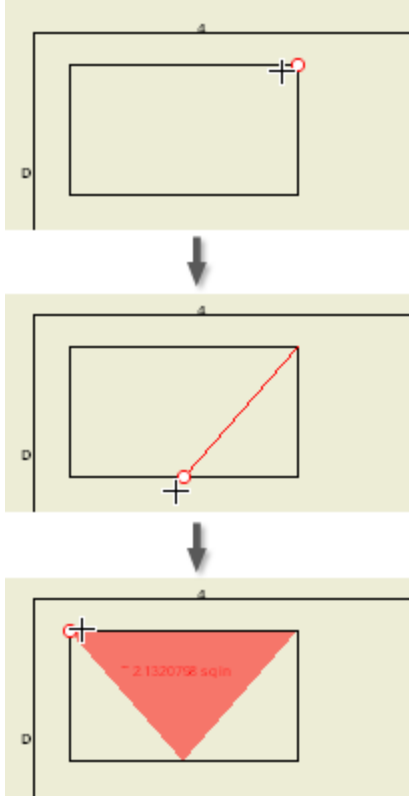
Select the second sheet in the sheet list to switch to that sheet.



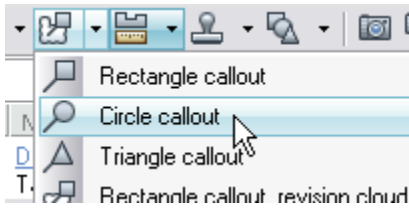
Click the **Area** measure tool.



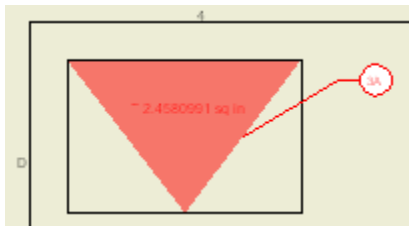
Select the endpoint, midpoint, and endpoint as shown. Press **Esc** to end the markup.



Click the **Circle callout** tool.

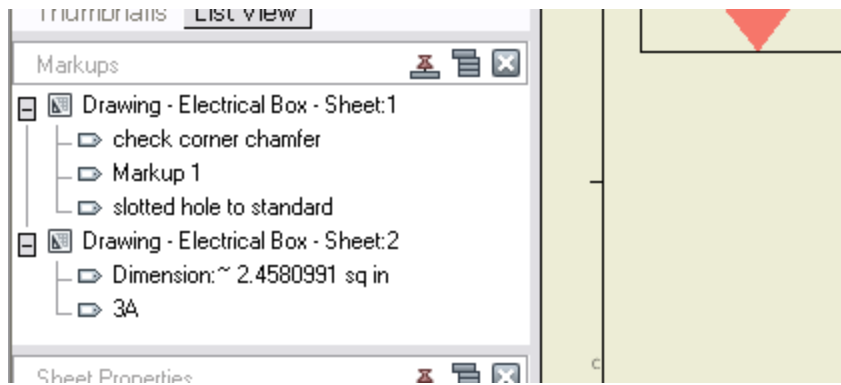


Add a callout to the area markup. Type **3A** for the callout text. Press **Esc** to exit the tool.

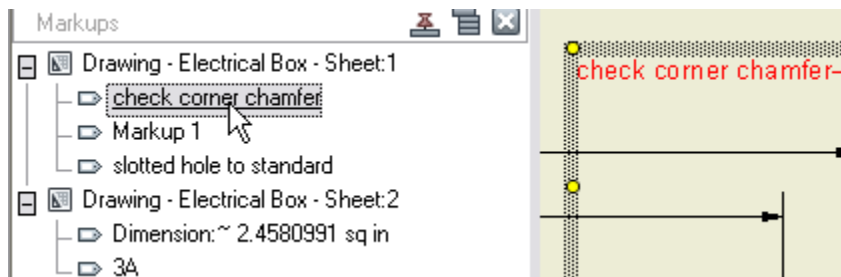


Click the **Save** button to save the markups.

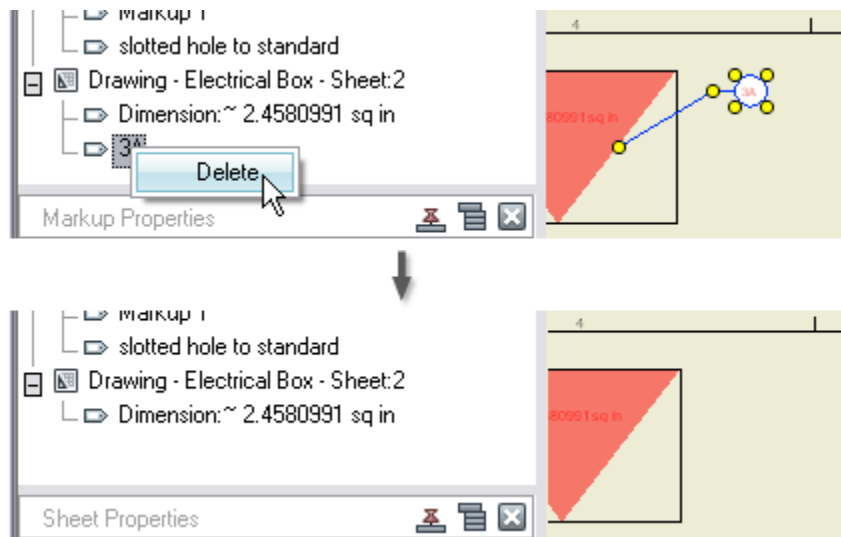
Ensure you can plainly see the entries in the Markups window. Note that you can drag the window borders to resize the window.



The markups and sheet names are links that jump to the actual item. Click the **check corner chamfer** markup to jump to and select that markup.

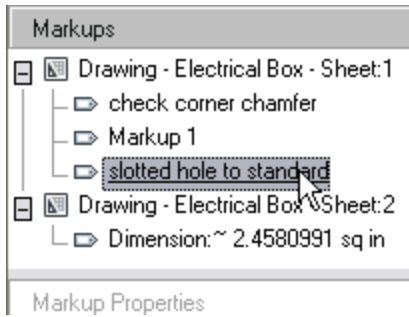


You can delete markups from the Markups window. Right-click **3A** and select **Delete**.



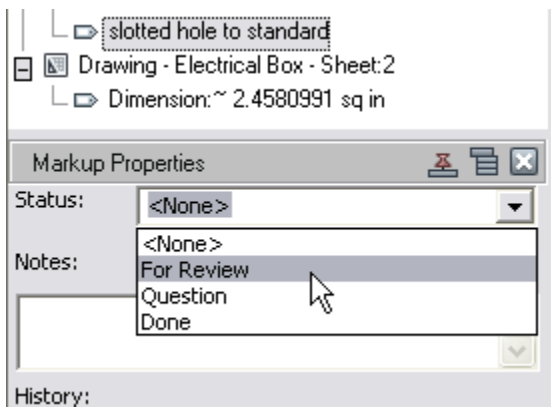
You can edit and add more details to the markups.

In the Markups window, select the **slotted hole to Standard** link to switch to that markup.

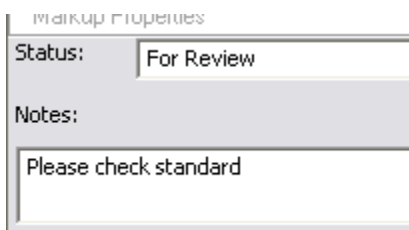


When you select a markup, the Markup Properties panel lists various options and input fields for the selected markup.

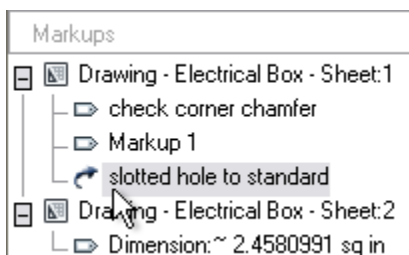
From the Status menu, select **For Review**.



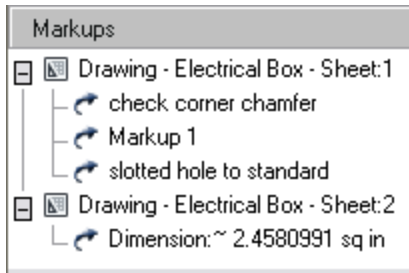
In the Notes field, type **Please check standard**.



Notice that the icon next to the markup link changes to indicate the current review status.



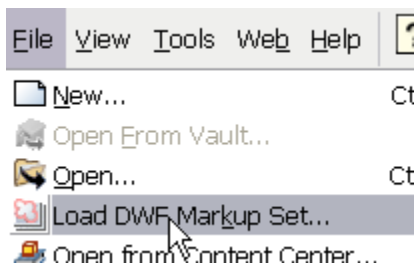
Select the three other markups and change the status to **For Review** for each markup, in turn.



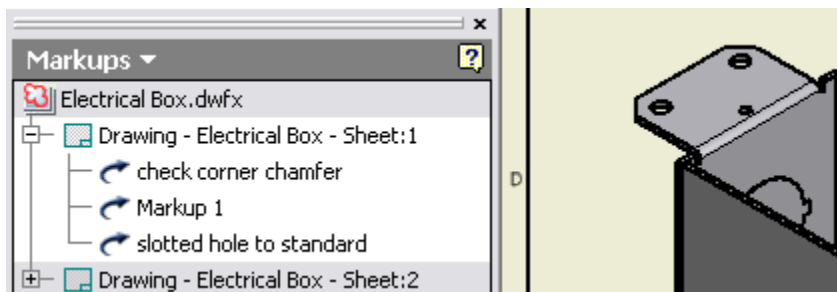
Save the markups.

Close Autodesk Design Review.

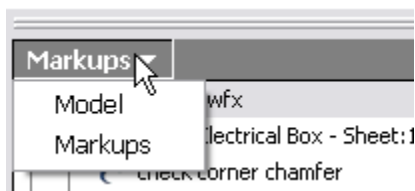
Return to Inventor. From the File menu, select **Load DWF Markup Set**.



Select **Electrical Box.dwf** located on your desktop. Click **Open**. The markups are loaded and the drawing browser displays the markups.

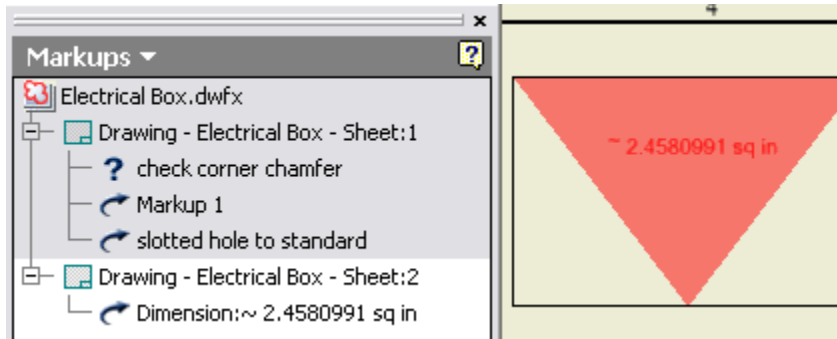


Note: When you load a markup set, you open the actual .idw file. The drawing browser loads in markup mode but drawing view and annotation tools are available, the same as a drawing that contains no markup. To switch the browser between drawing mode and markup mode, use the menu picks at the top of the drawing browser.

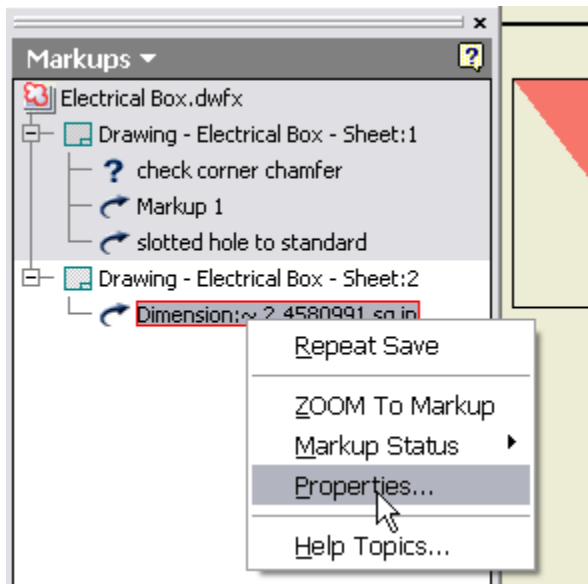


Right-click the **check corner chamfer** markup in the browser and select **Markup Status > Question**.

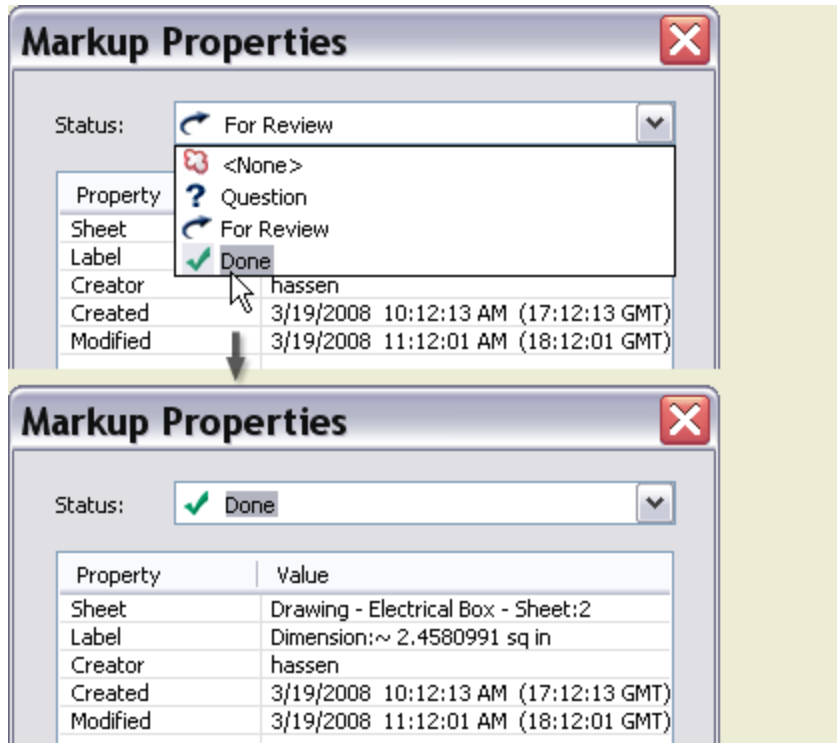
Double-click the second sheet in the browser to activate the sheet.



Right-click the Dimension markup and select **Properties**.

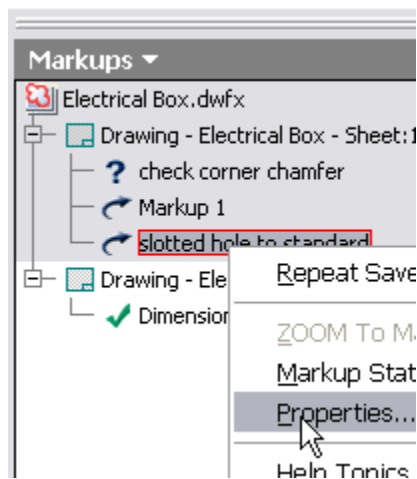


From the Status menu, select **Done**.



Click **OK**.

Right-click the **slotted hole to standard** markup and select **Properties**.

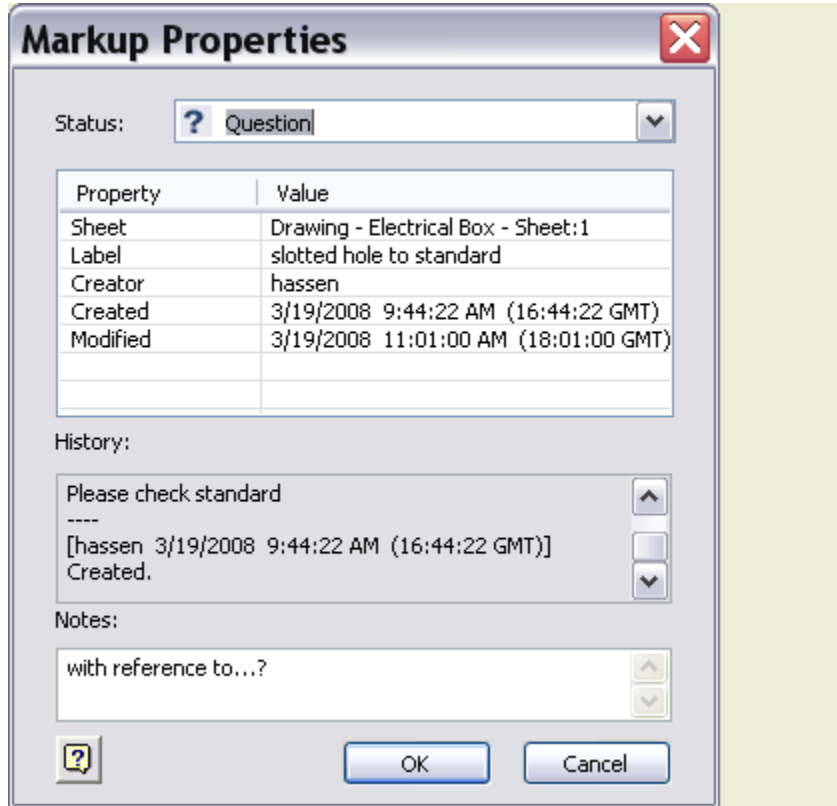


Scroll in the History window to see the file history. Note that this is where any markup comments appear. (The comment Please check standard that you added in Autodesk Design Review is part of the history.)

You can add comments and questions to the Notes field.

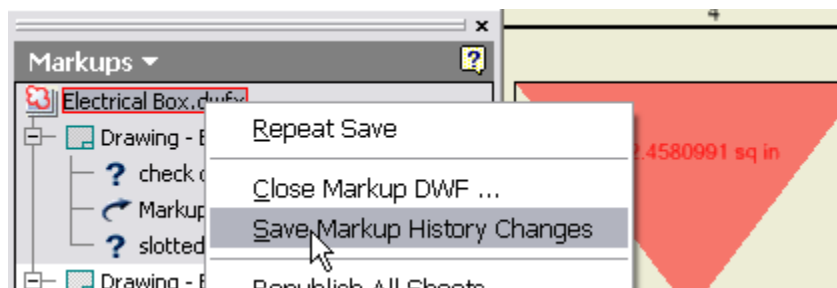
In the Notes field, type **with reference to...?**

Change the status to **Question**.

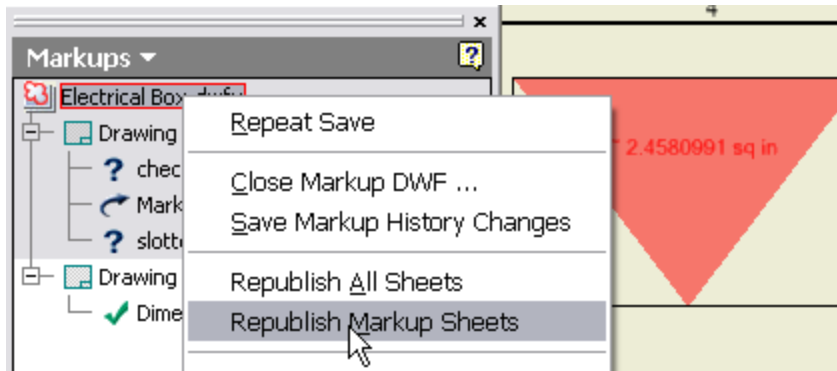


Click **OK**.

At the top of the browser, right-click **Electrical Box.dwf** and select **Save Markup History Changes**.



Right-click again and select **Republish Markup Sheets**.

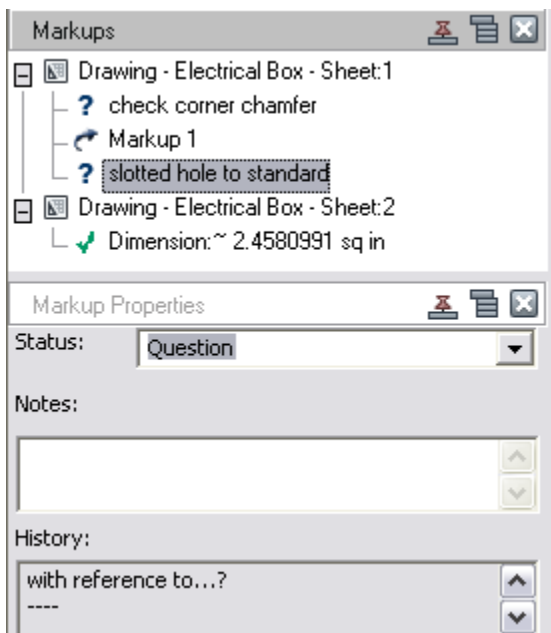


Note: If Autodesk Design Review was open with Electrical Box.dwg loaded, you would not be able to save the changes.

Specify your desktop and select **Electrical Box.dwg** to assign the file name. You overwrite the existing file. Click **Save**.

Start Autodesk Design Review, then open the updated DWF file.

Click the **slotted hole to standard** markup.



In the **History** field of the Markup Properties panel, notice that the **with reference to...?** - question you added in Inventor - appears at the top of the history. (Click the scroll buttons to see the entry.)

As you can see, the markup and review cycle can continue, as needed, until issues are resolved. You can check the Help files in both Autodesk Design Review and Inventor for further information.